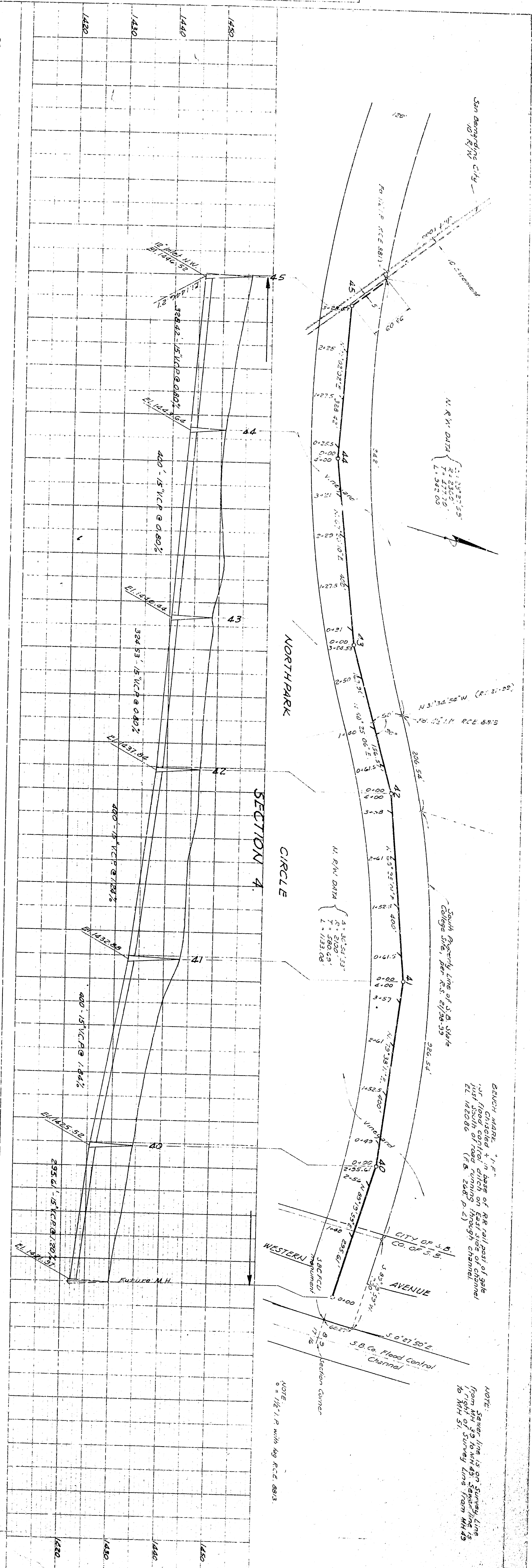
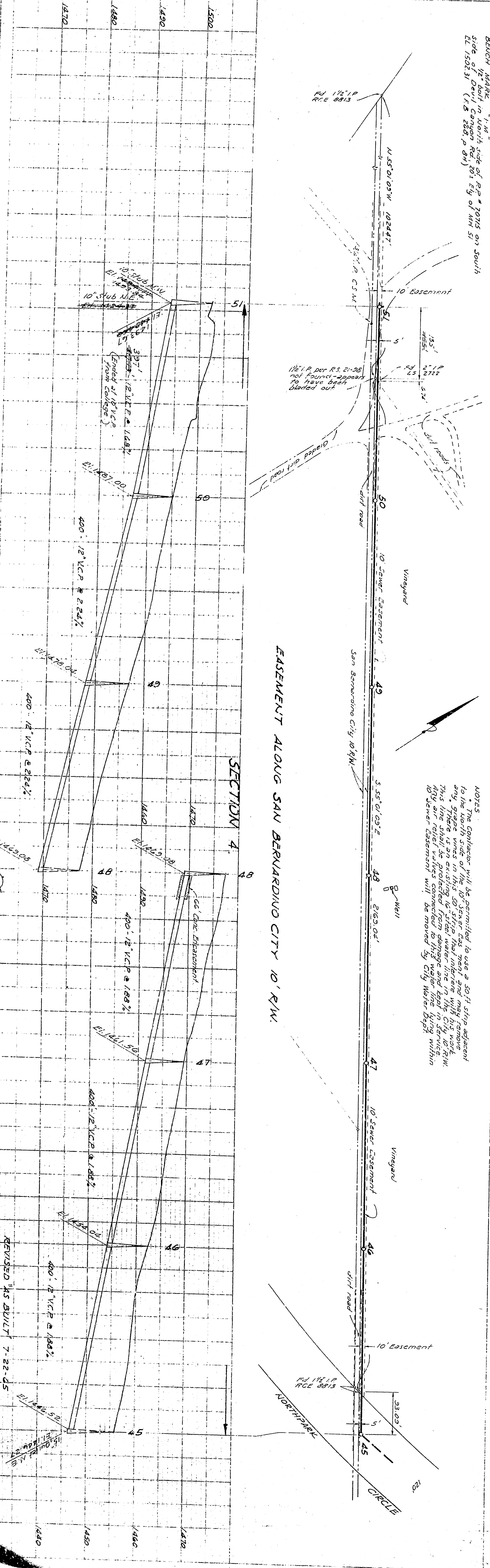


PROFILE		BY	
DESIGNED	REVISION	DATE	
NOTE BOOK	GRADES CHECKED	NO.	NO. 4010
STRUCTURE INDICATIONS CHECKED			

PLAN		BY	
DESIGNED	REVISION	DATE	
NOTE BOOK	GRADES CHECKED	NO.	NO. 4010
STRUCTURE INDICATIONS CHECKED			



BENCH MARK "1" is  
 1/4" P. R.S. 21-38  
 not found - appears  
 to have been  
 blocked out

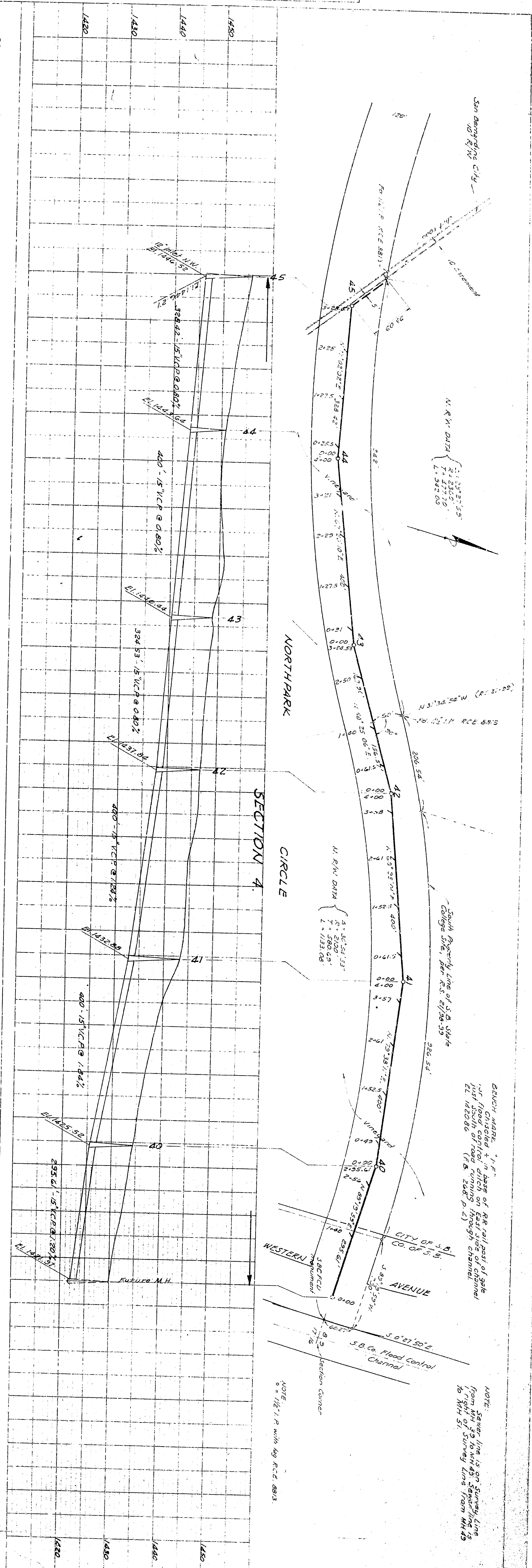
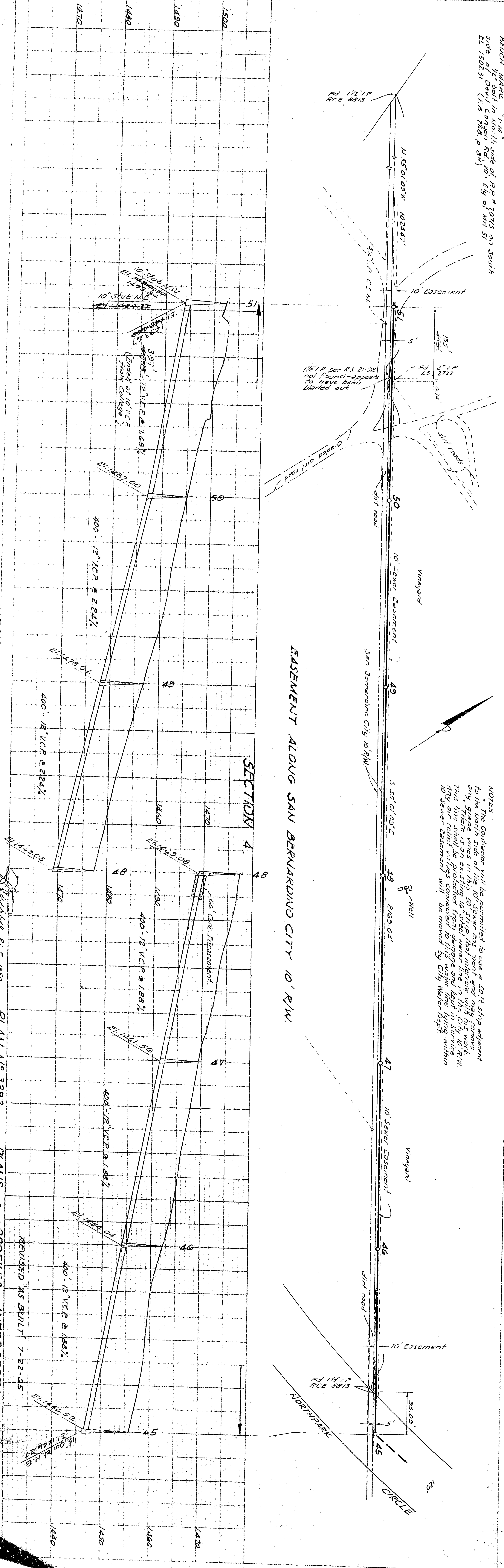
NOTES:  
 1. The contractor will be permitted to use a 50' strip adjacent  
 to any sewer lines in this district and may remove  
 any trees and existing structures in the City of San  
 Bernardino which are located within the 10' R/W  
 of the sewer easement will be moved by City Water Dept.

BENCH MARK "1" is  
 1/4" P. R.S. 21-38  
 not found - appears  
 to have been  
 blocked out

NOTE:  
 Sewer line is on Survey line  
 from M.H. 29 to M.H. 30  
 to M.H. 31  
 Survey line from M.H. 29  
 to M.H. 31

PROFILE	
DESIGNED	BY
NOTED	DATE
GRADIS CHECKED	
NO. 1010	
STRUCTURE INDICATIONS CHECKED	

PLAN	
SURVEYED	BY
PLATTED	DATE
ALIGNED	
NO. 1010	
AT 60' WAY CHECKED	



**EASEMENT ALONG SAN BERNARDINO CITY 10' R/W**

**NOTES**  
 1. The contractor will be permitted to use a 50' strip adjacent to any sewer line in this project and may remove any trees and structures existing in this strip in the City of San Bernardino. This strip will be used for the sewer line in the City of San Bernardino. Any air relief valves connected to this sewer line in service within 10' sewer easement will be removed by City Water Dept.

PLANS & PROFILES INTERSECTING SEWERS  
 SAN BERNARDINO CALIFORNIA  
 CURRIE ENGINEERING COMPANY  
 SHEET 1-1-008